

CAPE STYLE

AUGUST 1997 R7.95 INC VAT
FSA, TRAVEL & NEW TAX DUTY AND
SALES TAX INC. ZIMBABWE Z\$8.65
OTHER COUNTRIES R8.35 EXCL TAX

Who's
earning
BIG
MONEY
right now

**AROUND
THE WORLD
ON R8 000**

Our new
singles
service
LIAISONS

**WIN
THE BEST
PARTY OF
YOUR LIFE**

**CAPE
TOWN'S
ELIGIBLE
MACHO MAN**

**TOP CAPE
RESTAURANTS
THAT DON'T
LOAD THE
WINE PRICE**

HOT STUFF!

Living, decor, fashion



COASTAL HOME

Beach house at Betty's Bay

by BONNIE LEVITAN





This rugged holiday home was designed by Cape Town architects Jan Visser and Mark Thomas. It blends unobtrusively into the fynbos landscape close to the sea at Betty's Bay.

The house is designed as a cluster of buildings around a courtyard, which provides shelter from the south easter which blows almost every day in summer. The rooms are linked by an open veranda, looking into the courtyard as well as having views of the sea and mountains. ▶

Main picture: Sunset view, looking towards the entrance to the courtyard and cluster of buildings connected by an open veranda. Double doors open into a bedroom courtyard behind the stone wall. The fynbos and sea are in the distance

Right from top: The stone side-walls of the house extend to form buttresses which offer wind protection and framed views. Cement joints in the sandstone blocks are kept well recessed, giving a rugged appearance. Solid timber shutters secure the house

View along the west face of the building, from living room deck to bedroom wing deck. The blue solid timber shutters form an important architectural feature of the house

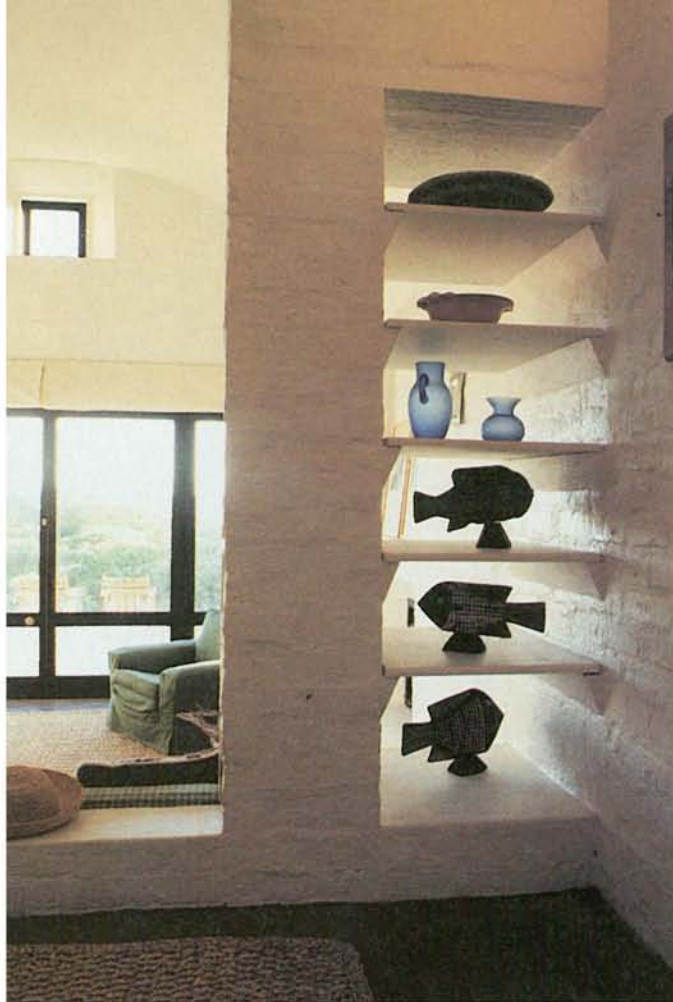
The timber deck without balustrades makes for a pleasant and easy transition from deck, to fynbos, to sea

The braai area open to the sea breeze but the timber doors can be closed for wind protection

A veranda connects the living and sleeping wings while a courtyard provides protection in windy weather







All bedrooms have en-suite bathrooms and the living room and main bedroom-study open onto large sea-facing decks for use in calmer weather.

Vaulted ceilings and splayed reveals of the windows make the most of the sunlight. On the outside the stone walls and tinted plaster will weather in an attractive way. Solid timber shutters, that can close the house up when it is not occupied, complete the picture that this is a holiday house. ♦

Main picture: The livingroom looks into the kitchen. Built-in seats integrate as features into the walls

Left: Shelving resting on splayed plaster brackets. The carved timber fish are from Zambia

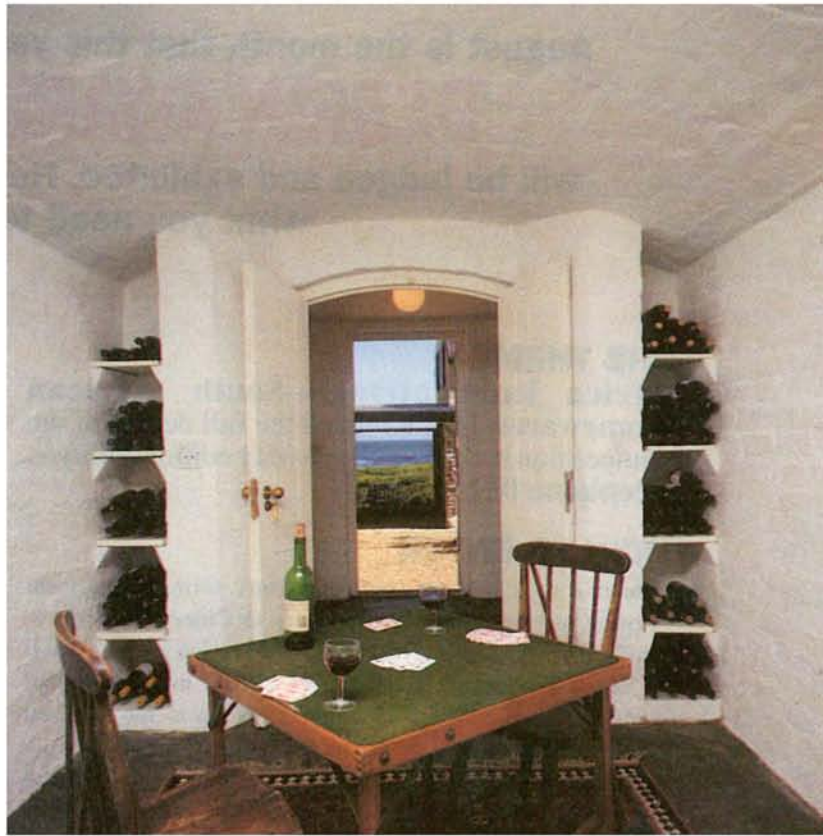


The main bedroom with its vaulted ceiling. At the other end of the bedroom is a small courtyard



View of the main bathroom with its shell-motif plastic shower curtain





Main picture: The kitchen has a vaulted ceiling, granolithic floors and open shelves with basket drawers

Top: The slit window in the dining room gives a pleasant panoramic view of the sea as well as providing a display ledge

Above: The ceiling in the wine cellar is brick vaulted. Shelving rests on splayed plaster brackets, a system used throughout the house