

SOUTH AFRICAN ARCHITECT

JOURNAL OF THE SOUTH AFRICAN INSTITUTE OF ARCHITECTS
JULY/AUGUST



New pre-school and sports centre

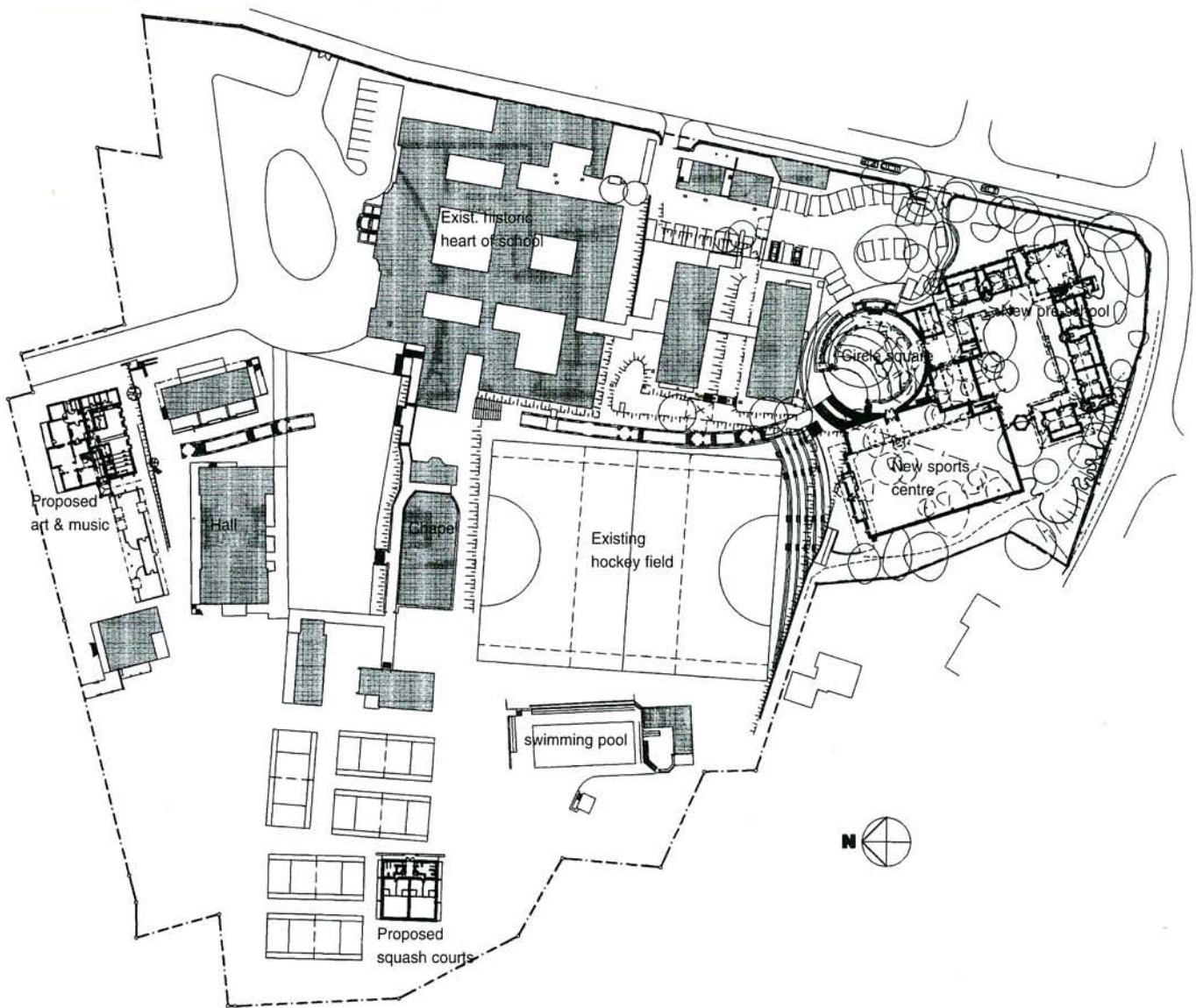
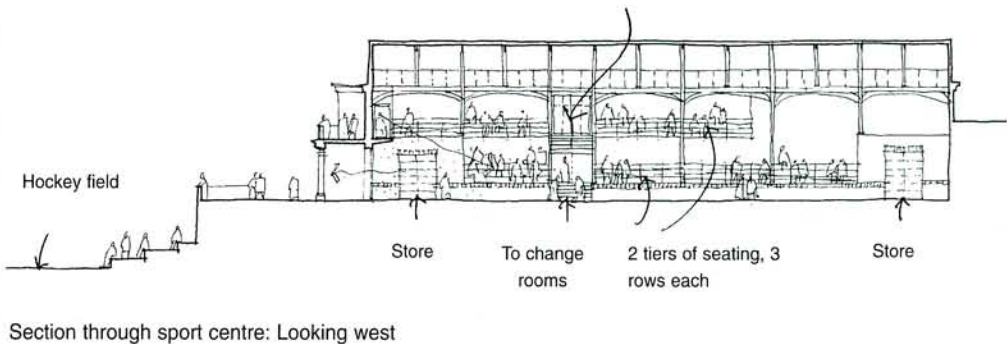
Oranjezicht, Cape Town

This scheme represents a cohesive strategy whose success lies in its place making qualities. A tactile environment is expressed in the design development and conceptual drawings.

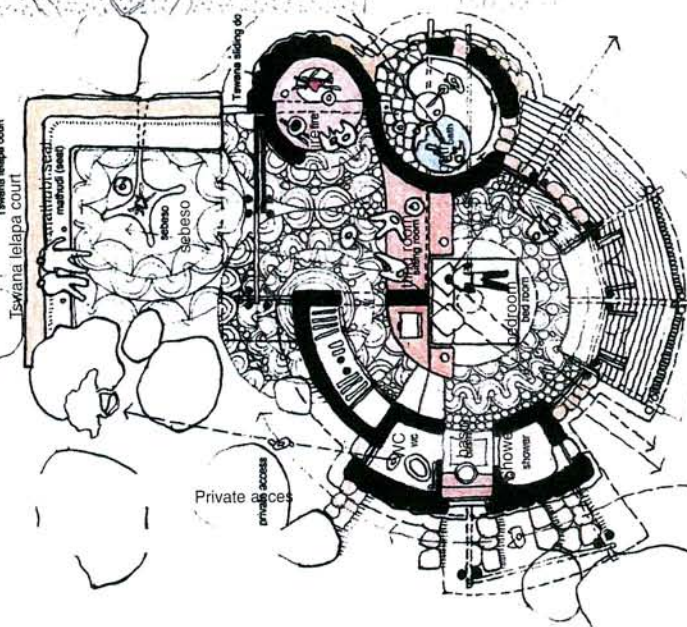
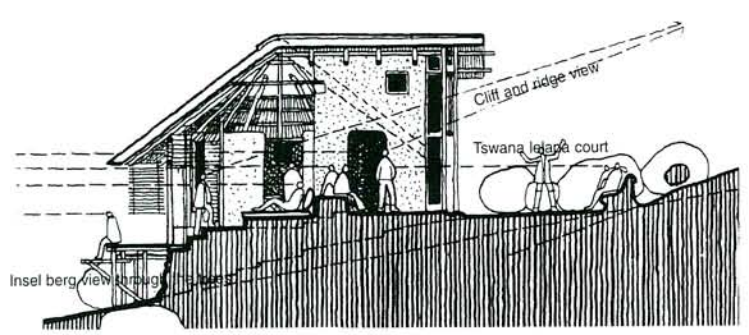
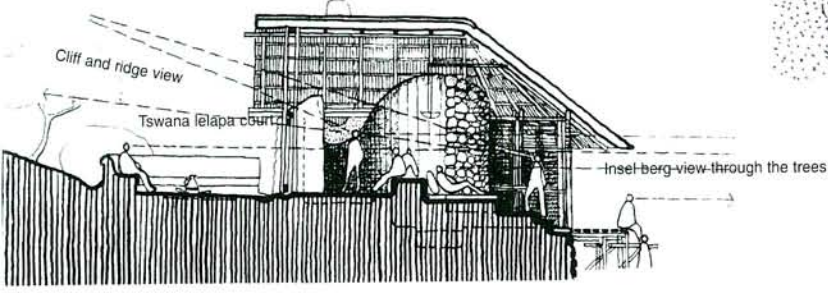
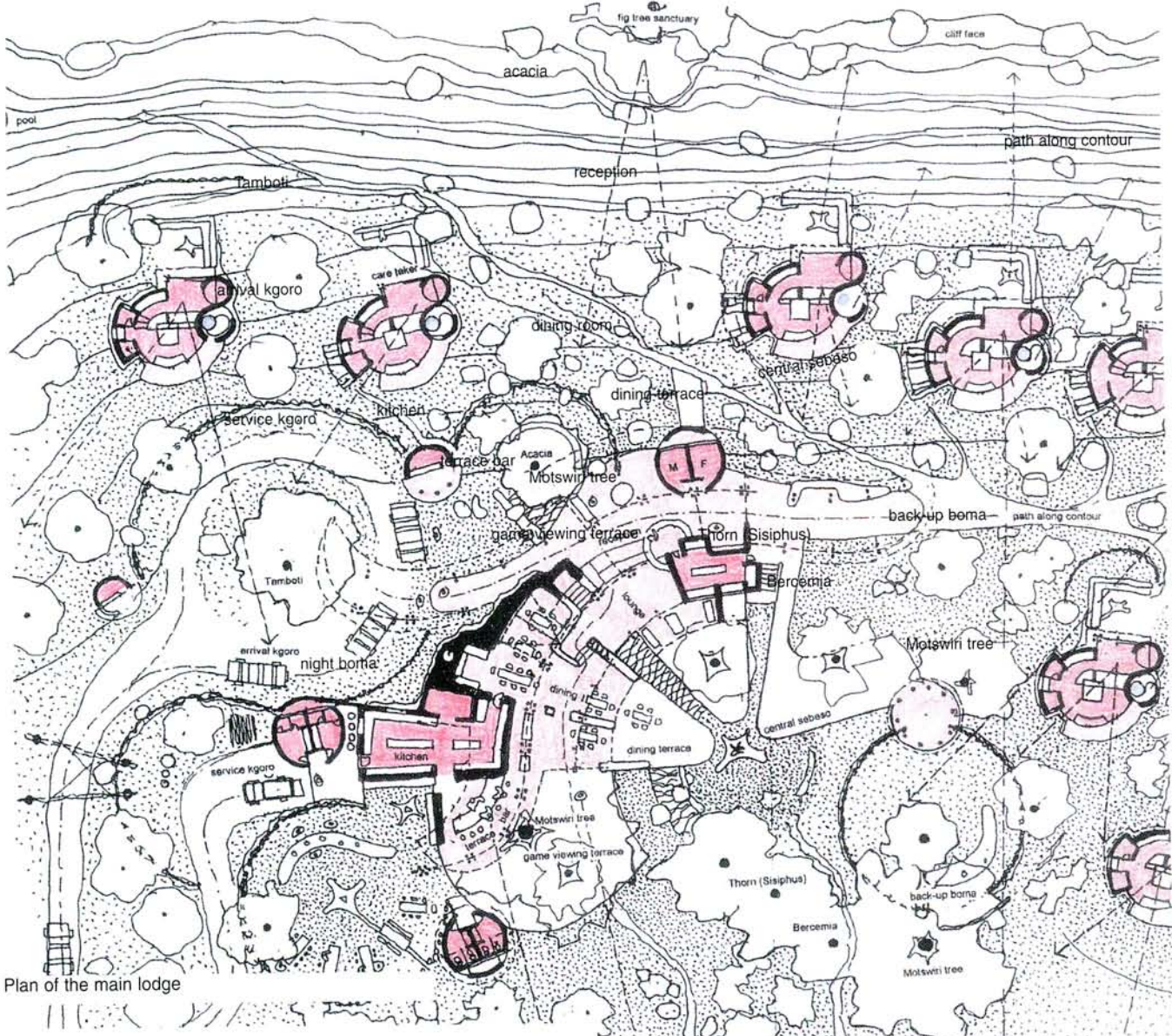
The new buildings, a pre-school and sports centre, are appropriately scaled additions that respond to the sloping site and establish a sensitive relationship with the existing school complex. Circulation throughout is well handled, resulting in very special intermediate and "public" outdoor spaces.

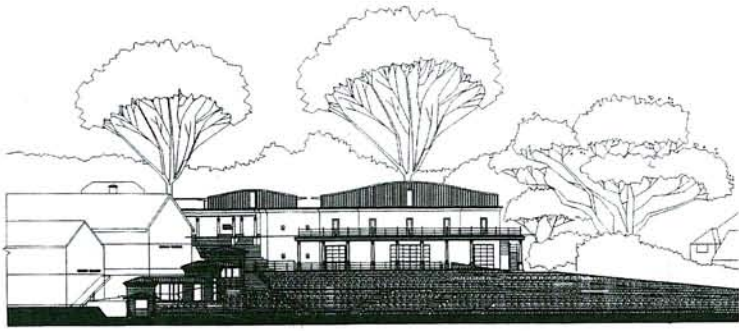
The jurors expressed concern over aspects of architectural language at times and in particular the classroom roof forms.

Architect: Jane Visser, Mark Thomas

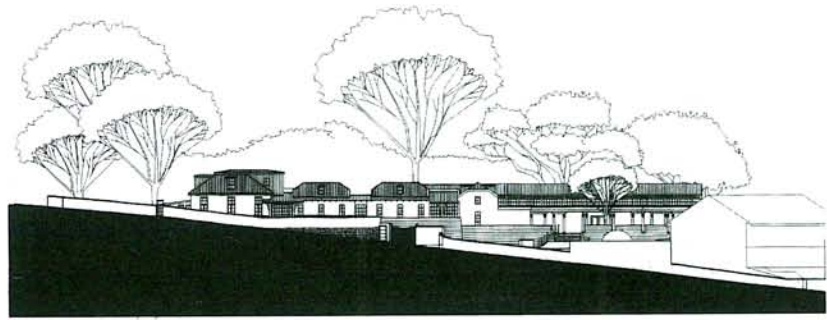


Site plan

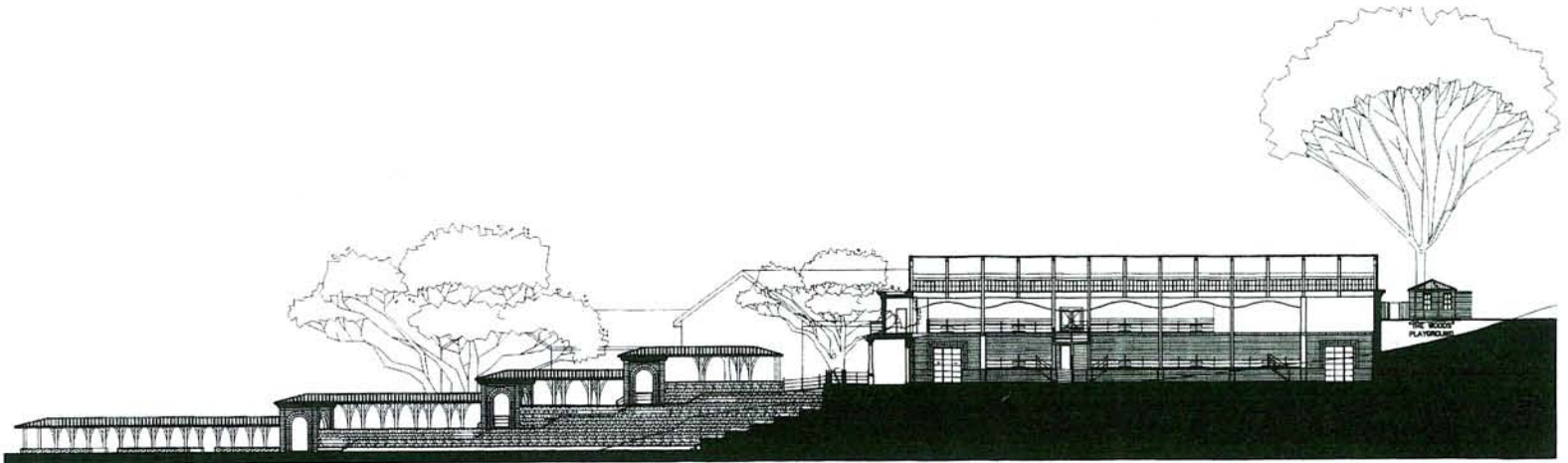




North elevation



East elevation



Hockey field

Hockey terrace

Sports centre

Internal elevation of sports centre

